



For more than 22 years, Syracuse University's Women in Science and Engineering (WiSE) has proudly supported the recruitment, persistence, and advancement of women in STEM.

Friday, April 1, 2022, 11:30 AM—5:30 PM
Drumlins Country Club, 800 Nottingham Road, Syracuse, NY



Celebration Agenda

12:00 PM - Welcome and Opening Remarks

Kent Syverud, Chancellor and President of Syracuse University

Luncheon and Keynote Speaker

Gender Equity: Yesterday, Today, and Tomorrow

Dr. Virginia Valian, Distinguished Professor of Psychology, Hunter College

Co-author of "An Inclusive Academy: Achieving Diversity and Excellence"

1:00 PM - WiSE: Past, Present, Future

Dr. Shobha Bhatia, Meredith Professor of Teaching Excellence, Civil and Environmental Engineering

WiSE Co-Founder and WiSE Faculty Co-Director

1:30 PM - Past, Present, Future: The Graduate Perspective

Moderator: Dr. Laura Lautz G'05, Program Director, Hydrologic Sciences, National Science Foundation

Dr. Ariel Ash-Shakoor G'17, Biomedical Engineer, Food and Drug Administration

Francielli Silva Genier, Chemical Engineering Ph.D. candidate

Kayla Wagner '14, G'16, President, ASD Diagnostic Products, Quadrant Biosciences, Inc.

2:15 PM - Changing the Face of Science and Engineering at Syracuse and Beyond

Dr. M. Cristina Marchetti, Professor of Physics, University of California Santa Barbara

2:40 PM - WiSE Tea (A WiSE Tradition) and Provost Remarks

Dr. Gretchen Ritter, Vice Chancellor, Provost and Chief Academic Officer

3:15 PM - Norma Slepecky Undergraduate Research Prize

3:30 PM - Past, Present, Future: The Undergraduate Perspective

Moderator: Yousr Dhaouadi '17, Chemical Engineering Ph.D. candidate

Treasure Bellamy '17, Scientist, L'Oréal

Catherine Campbell, Undergraduate in Medicinal Chemistry and Physics

Julia Riley '20, Neuroscience Ph.D. candidate, University of Pennsylvania

4:00 PM - Closing Invocation

4:30 PM - Reception

Distinguished Presenters and Panelists

Kent Syverud, Chancellor and President of Syracuse University

Chancellor Kent Syverud is the 12th Chancellor and President of Syracuse University. Now in his ninth year as Chancellor, he has worked with faculty, students, staff, trustees and alumni to steward the University during a period of transformational change and progress. A strategic plan spearheaded by Chancellor Syverud has reinforced and advanced Syracuse's aspirations, as the University has focused on redefining and enhancing every aspect of the student experience and empowering faculty and research excellence. During his tenure, the University has seen record applications and enrollment, attracting an increasingly diverse and academically accomplished undergraduate student body. Under his leadership, the University has hired more than 120 faculty since 2018 into targeted interdisciplinary research clusters designed to tackle some of the world's biggest challenges, strengthen research and expand faculty diversity.



Gretchen Ritter, Vice Chancellor, Provost and Chief Academic Officer

Gretchen Ritter is the Vice Chancellor, Provost and Chief Academic Officer. She joined Syracuse University in October 2021 from The Ohio State University College of Arts and Sciences, where she was executive dean and vice provost. As the chief academic officer for the largest college of arts and sciences in the United States, she was responsible for the academic success and research excellence of more than 17,000 undergraduate students, 2,300 graduate students and 1,300 faculty. Prior to joining Ohio State, Ritter served as the Harold Tanner Dean of Arts and Sciences at Cornell University from 2013 to 2018, when she returned to the faculty. At Cornell, she provided strategic vision and oversight for 28 departments encompassing more than 500 tenured and tenure-track faculty, serving 5,600 students, with an annual budget of more than \$400 million. As a scholar, Ritter is a leading expert in the history of women's constitutional rights and contemporary issues concerning democracy and citizenship in American politics.



Syracuse University Vision

Syracuse University aspires to be a pre-eminent and inclusive student-focused research university, preparing engaged citizens, scholars and leaders for participation in a changing global society.

Distinguished Presenters and Panelists



Dr. Virginia Valian

Virginia Valian is Distinguished Professor of Psychology at Hunter College - CUNY, and is a member of the doctoral faculties of Psychology, Linguistics, and Speech-Language-Hearing Sciences at the CUNY Graduate Center. She is a member of three training areas in Psychology - Cognitive and Comparative Psychology, Developmental, and Basic and Applied Social Psychology. Valian directs the Language Acquisition Research Center at Hunter College. Valian is also co-founder and director of Hunter's Gender Equity Project. She performs work on the reasons behind women's slow advancement in the professions and proposes remedies for individuals and institutions. She has written on sexual harassment, recognition, and on how to improve women's progress in the work world in general and academia in particular. She is co-author of "An Inclusive Academy: Achieving Diversity and Excellence."



Dr. M. Cristina Marchetti

M. Cristina Marchetti is a Distinguished Professor of Physics at the University of California Santa Barbara. She was educated in Italy at the University of Pavia, earned her Ph.D. in the U.S. at the University of Florida, and joined the faculty at UC Santa Barbara in 2018, after thirty years on the faculty at Syracuse University, where she rose to the rank of William R. Kenan, Jr. Distinguished Professor of Physics. Marchetti is a theoretical physicist who has worked on a broad range of problems in condensed matter physics, including supercooled fluids, superconductors and driven disordered systems. Currently, she is interested in understanding the emergent behavior of "active matter." She is a Fellow of the American Physical Society and of the American Association for the Advancement of Science, and a member of the American Academy of Arts and Sciences and of the U.S. National Academy of Sciences.



Dr. Shobha K. Bhatia

Shobha K. Bhatia is Professor of Civil and Environmental Engineering at Syracuse University, specializing in geotechnical engineering. Her current work is in novel applications of natural and synthetic materials to increase safety and sustainability. She has served on prestigious national committees and received national and University awards. In 2020, she was recognized as a Geo Legend by the American Society for Civil Engineering. She is the Co-Founder/ Co-Director of Women in Science and Engineering at the University (WiSE). She was co-PI of the University's NSF ADVANCE Institutional Transformation grant (called SU ADVANCE). Bhatia was recognized by the Woman in Engineering Proactive Network (WEPAN) for her equity work with the University Change Agent Award, 2015.

WiSE Mission

WiSE programs support the persistence and excellence of women in STEM by capitalizing on their unique strengths, maximizing opportunities to connect, and addressing challenges experienced by women undergraduates, graduates, postdoctoral fellows, and faculty.

Distinguished Presenters and Panelists

Dr. Katharine (Kate) Lewis

Katharine (Kate) Lewis is Chair and Professor of the Department of Biology at Syracuse University. She is also a Laura J. and L. Douglas Meredith Professor for Teaching Excellence, Faculty Co-Director of Syracuse University WiSE and in 2019 she was awarded the James K. Duah-Agyeman Award for Outstanding Faculty. She obtained a BA in Genetics (first class) from the University of Cambridge, a MA in Women's Studies from the University of Westminster and a Ph.D. from University College London. She also spent a year at Harvard University as a Kennedy Memorial Scholar. Her postdoctoral research was undertaken at the University of Oregon and she started her first faculty position as a Royal Society University Research Fellow in the Department of Physiology, Development and Neuroscience at the University of Cambridge, where she was also a fellow of King's College, Cambridge and a National Endowment for Science, Technology and the Arts Crucible fellow. She moved to Syracuse University as an Associate Professor in 2010. She is a Developmental Biologist and Geneticist by training and is interested in elucidating the gene regulatory networks that act during embryonic development to specify the functional characteristics that enable spinal cord nerve cells to operate properly in neuronal circuitry.



Dr. Laura Lautz G'05

Laura Lautz is a Program Director in the Hydrologic Sciences Program at the National Science Foundation (NSF). The program supports, with a budget of \$14 million, research on continental water processes. Her independent research addresses how hydrologic processes influence water quality and movement through surface and groundwater systems. Lautz was born in Syracuse, NY and earned her PhD from Syracuse University in the Department of Earth Sciences. She joined the department's faculty in 2008 and served as the Jesse Page Heroy Professor and Department Chair of Earth Sciences before joining NSF. Lautz received the Syracuse Chancellor's Citation for Faculty Excellence and Scholarly Distinction, a CAREER award from NSF, and is a Fellow of the Geological Society of America. She lives in northern Virginia with her husband, twin 12 year olds, dog, and cat.



Dr. Ariel Ash-Shakoor G'17

Ariel Ash-Shakoor is a Biomedical Engineer and Diversity and Inclusion Program Manager at the U.S. Food and Drug Administration. She reviews interventional cardiovascular device regulatory submissions and leads a study on the enrollment of diverse groups in cardiovascular clinical trials in the Office of Product Evaluation and Quality. She also leads the inaugural Diversity and Inclusion committee. She received her Ph.D. in Bioengineering from Syracuse University. For her thesis, she created a novel, shape-changing biomaterial substrate that can create nano-wrinkles in situ and studied the combined effects of topography and chemistry on cell behavior. In graduate school, she was a mentor for the Women of Color in STEM program and an associate of the WiSE Future Professionals Program. She created a STEM community tutoring program and served as a leader and participant in a variety of campus organizations and outreach programs. She received her Bachelor of Science from the University of Maryland in College Park.



Distinguished Presenters and Panelists



Francielli (Fran) Silva Genier

Francielli Silva Genier is a fifth-year Ph.D. candidate at the Department of Biomedical and Chemical Engineering. She is passionate about Material Science, and her research focuses on new materials and solutions for the next generation of rechargeable batteries. Her work has been presented at multiple conferences and published in high impact journals, including one featured on the cover of ACS Macromolecules. Silva Genier participated in the WiSE Future Professionals Program and was a graduate mentor for WiSE Women of Color in STEM. She received her master's and bachelor's degrees at the Federal University of Espirito Santo, Vitoria, Brazil. In her free time, Silva Genier enjoys taking long walks while listening to her favorite podcasts, and playing musical instruments, including piano and guitar.



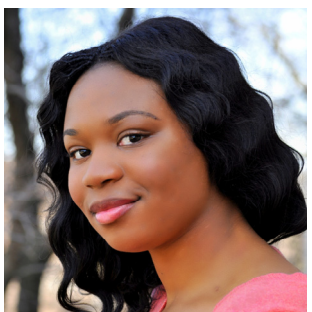
Kayla Wagner '14, G'16

Kayla Wagner is the president of ASD Diagnostic Products within Quadrant Biosciences, Inc. Kayla joined Quadrant in May 2017. Until her promotion to President of ASD Diagnostic Products in April 2021, Kayla led the development and commercialization of Clarifi ASD as VP of Product Management. This followed her role as VP of Research where she developed and led the Clinical Research Department, overseeing Quadrant's research portfolio and grants of more than \$5 million. Wagner earned a BS in neuroscience and psychology and an MS in Clinical Psychology at Syracuse University. Her research at Syracuse investigated many areas of child psychopathology, including autism and ADHD. Wagner's published research has a translational focus, with her interests surrounding early identification of autism, management of the comorbidity between autism and ADHD, and targets for intervention aimed at improving social outcomes for individuals with neurodevelopmental disorders. She was also an associate in the WiSE Future Professionals Program.



Yousr Dhaouadi '17

Yousr Dhaouadi is a fourth-year Ph.D. candidate in chemical engineering in the College of Engineering and Computer Sciences. She is conducting research on understanding persister cells residing in biofilms and involved in the resistance of chronic bacterial infections. Dhaouadi is a former associate in the WiSE Future Professionals Program. She has served in multiple leadership positions in the Graduate Student Organization and is currently serving as president. She transferred from the American University of Sharjah in the United Arab Emirates to Syracuse University for her bachelor's degree in chemical engineering. She is an international student from Tunisia.



Treasure Bellamy '17

Treasure Bellamy '17 graduated with a BS in Chemical Engineering and minor in African American Studies. Her involvement on campus included being a program assistant for and participant in the WiSE Women of Color in STEM program, tutor for the South Side Communication Center, and a transfer student mentor. Bellamy was a member of the National Society of Black Engineers, Syracuse University Chapter (NSBE) and the Louis Stokes Alliance for Minority Participation program (LSAMP). She currently works as a Scientist at L'Oreal in New Jersey. She is a member of the New York Society of Cosmetic Chemists and is the Education and Training Chair for the Junior League of Montclair-Newark.

Distinguished Presenters and Panelists

Catherine Campbell

Catherine Campbell is a senior in the Renee Crown Honors Program majoring in Medicinal Chemistry and Physics on the pre-med track. Her research work in the Bah Lab in the Biochemistry and Molecular Biology Department of SUNY Upstate Medical University studies the phase separation of intrinsically disorder proteins. She is currently working on her thesis “Characterization of the SARS-CoV-2 Nucleocapsid Protein” and has received support from the Syracuse Office of Undergraduate Research and Civic Engagement (SOURCE), the Louis Stokes Alliance for Minority Participation (LSAMP), WiSE Summer Research Program, and the Renee Crown Honors Program. Campbell is also a 2020-2021 associate of the WiSE Career Preparation Program. She currently serves as a Peer Educator within the Barnes Center at the Arch Health Promotion unit, as a member of the Dean’s Team, and as a student member of the Academic Integrity Panel. She dreams of using her desire to help others and passion for science to one day become a physician.



Julia Riley '20

Julia Riley is currently a second-year neuroscience PhD student and National Science Foundation Fellow in Dr. Erika Holzbaur’s lab at the University of Pennsylvania. Her thesis work will use optical and biochemical approaches to study the roles of mitochondrial damage and neuron-glia crosstalk in Parkinson’s disease. At Syracuse, she majored in Biochemistry and Neuroscience and worked in Dr. Carlos Castañeda’s lab. As part of her participation in the WiSE summer research program, she worked in collaboration with the Hehnlly and Hewett labs studying the impact of patient-derived mutations on the behavior of a protein implicated in ALS pathology. She also participated in meetings with WiSE’s invited scientists and was the 2020 recipient of WiSE’s Norma Slepecky Undergraduate Research Prize. Outside of lab, Julia is secretary of the University of Pennsylvania Neurosciences Graduate Lead Initiatives and Activities organization focusing on STEM outreach and development.



A very special thank you to our celebration sponsors...

Chancellor Kent Syverud
Provost Gretchen Ritter
College of Arts and Sciences
College of Engineering and Computer Science
Falk College of Sport and Human Dynamics
School of Education
School of Information Studies
Office of Research
The Graduate School
Women in Leadership
Department of Biology
Department of Biomedical and Chemical Engineer-

Department of Chemistry
Department of Civil and Environmental Engineering
Department of Communication Sciences and Disorders
Department of Earth and Environmental Sciences
Department of Electrical Engineering and Computer Science
Department of Mathematics
Department of Mechanical and Aerospace Engineering
Department of Physics
Department of Psychology
BioInspired Institute
Humanities Center
Visual Technologies

...and to our many colleagues and friends for supporting WiSE throughout the years!

WiSE Goals

*Build a strong community and network
for women in STEM.*

*Energize resiliency by helping to develop strategies that
address challenges and bridge differences.*

*Accelerate excellence by providing leadership development
and fostering professional skills, career management,
and work-life balance.*

*Motivate persistence towards degree completion,
career launch, and career advancement.*

*Stand up for equity and inclusion both
interpersonally and across campus.*



Stay connected with WiSE!

Office: 267B Link Hall

Website: suwise.syr.edu | Email: suwise@syr.edu

Social media: @TheSUwise



LinkedIn Alumni Group: <https://www.linkedin.com/groups/9155247>